

Windows Installation

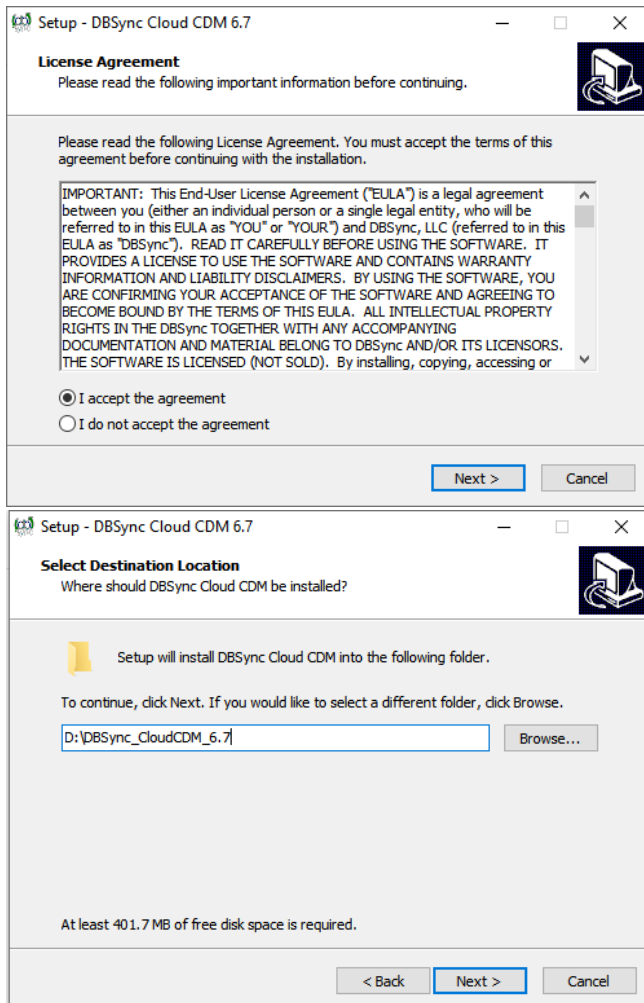
- Download the latest version of EXE file of the DBSync Cloud Replication tool from DBSync website using the URL

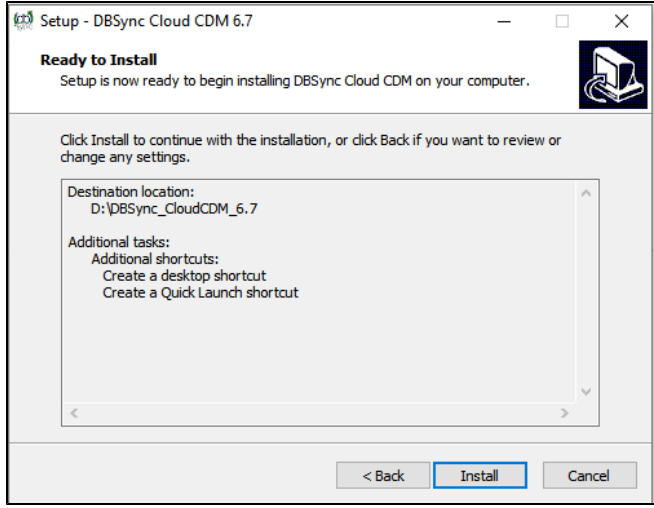
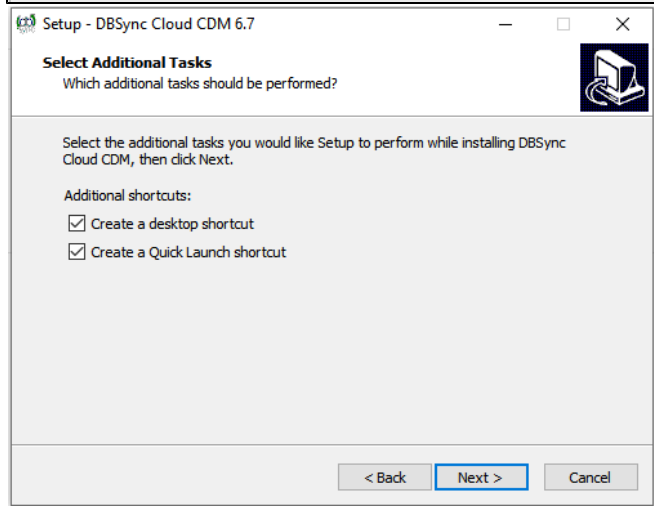
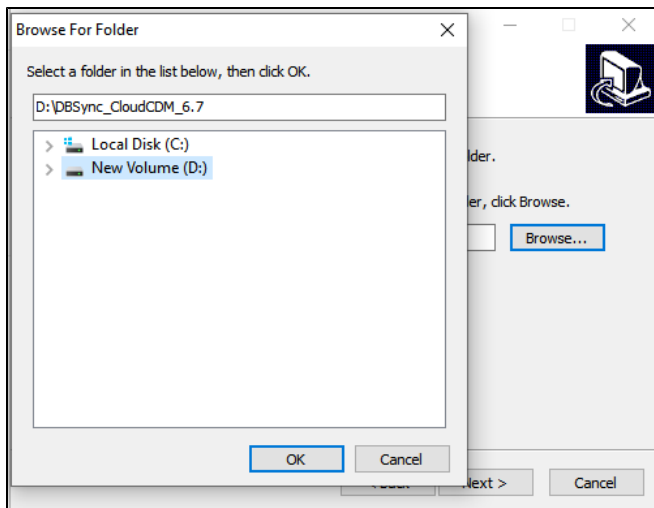
<http://mydbsync.com/integration/cloud-replication-for-salesforce>

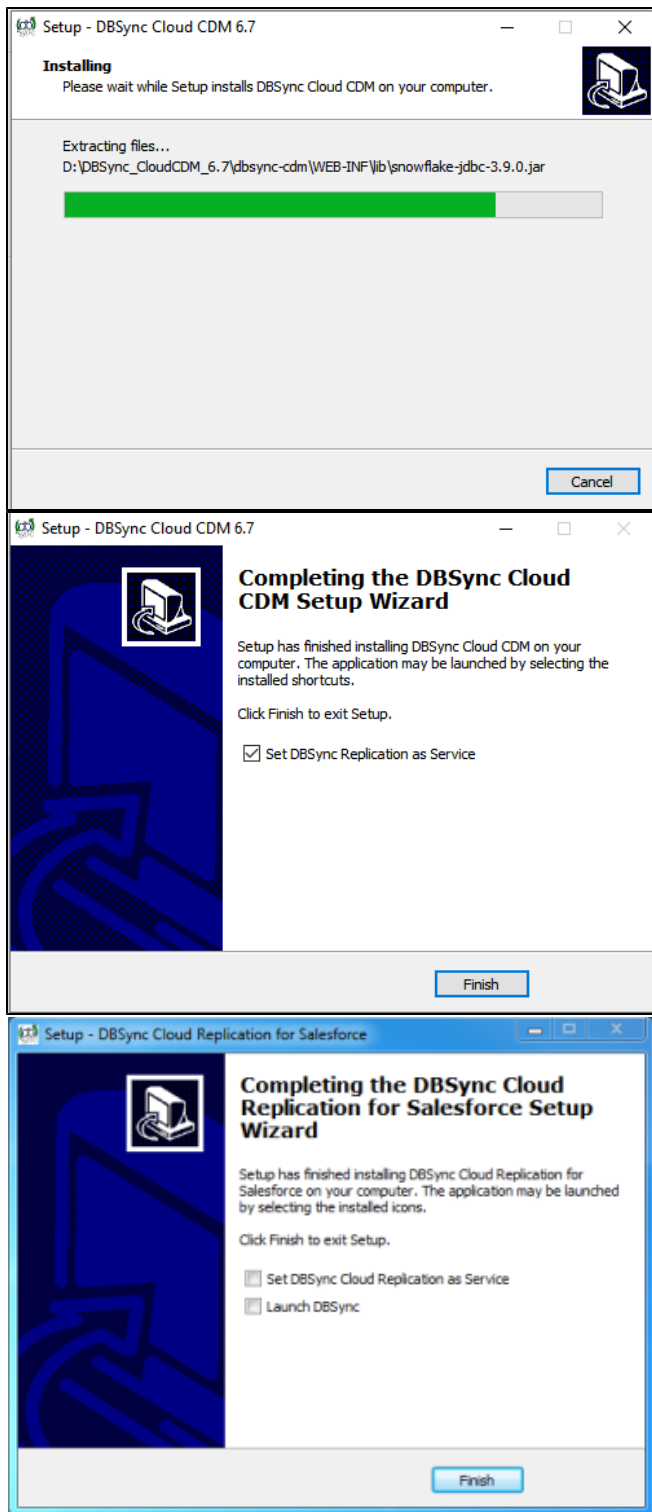
- With the EXE file, you can start the installation by either double-clicking on the file or by right-clicking and selecting the option **Run as Administrator**.

Note: If you are prompted by the Windows User Access Control pop-up window click on **Yes** to proceed further to the DBSync installation wizard.

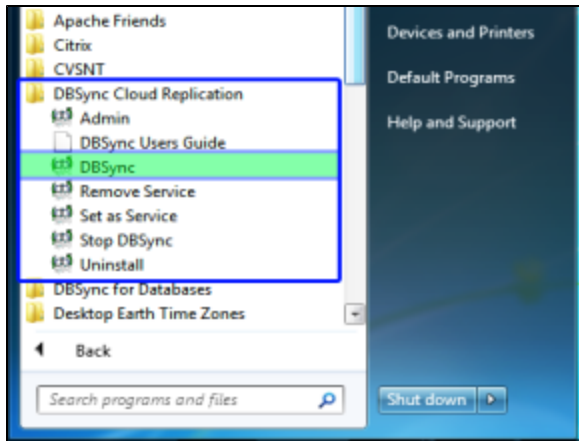
- Select the option **I accept the agreement** and click on **Next** button to proceed further.
- Click on the **Browse** button to select the desired location where you want to install the DBSync Cloud Replication Tool and click on the **Next** button to proceed to the next window.
- Configure Windows Start Menu shortcuts and Desktop icons if you wish to have them in the next installation windows in the Installation Wizard until you get to the **Ready to Install** window as shown below.
- Click on the **Install** button and wait until the installation has completed successfully.
- Once the installation is completed, select the first check-box to set the DBSync Cloud Replication as a Windows service. If the check-box is left unchecked, DBSync will start as a tomcat console. Select the second check-box to launch the DBSync Replication console. Click on **Finish** to exit the Installation Wizard.







- This completes the installation of the DBSync Cloud Replication tool on your system.
- To start the DBSync Cloud Replication tool as a console click on Windows Start > Programs > DBSync Cloud Replication > DBSync



- If DBSync is set to run as a Windows Service, navigate to the Windows services list start **Apache Tomcat-DBsync Cloud Replication for Salesforce** service.

Start > Control Panel > Administrative Tools > Services > Apache Tomcat-DBsync Cloud Replication for Salesforce.

- Once the service or the application is started, you can get into the Replication console from the Windows start menu.

Start > Programs > DBSync Cloud Replication > Admin

- Running the application under batch mode:
 - a. Go to <install folder>/dbsync/scripts. Make sure that setenv.bat points to your install directory.
 - b. For Sync schema Run – run <profile name> Update Schema
Example: run DBSync Update Schema
 - c. For getting a clean copy Run – run <profile name> Cleancopy
Example: run DBSync Cleancopy
 - d. For moving data from [Salesforce.com](https://www.salesforce.com) to database Run – run <profile name> Source to DB
Example: run DBSync Source to DB
 - e. For moving data from database to [Salesforce.com](https://www.salesforce.com) Run – run <profile name> DB to Source
Example: run DBSync DB to Source