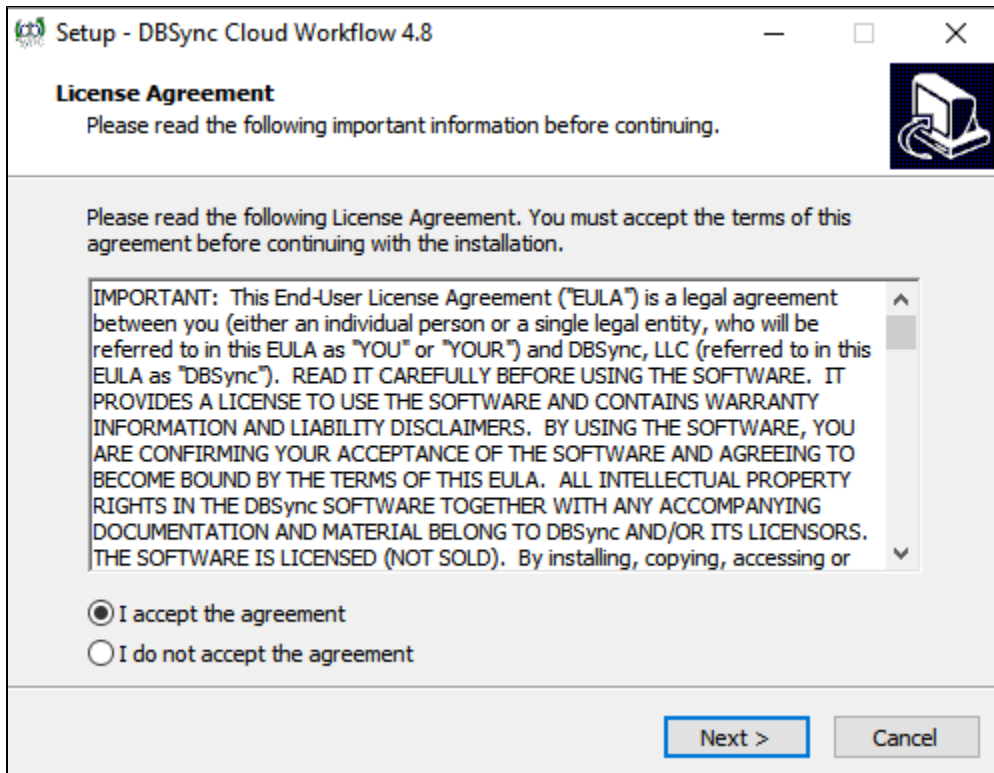


# DBSync On-Premise Installation

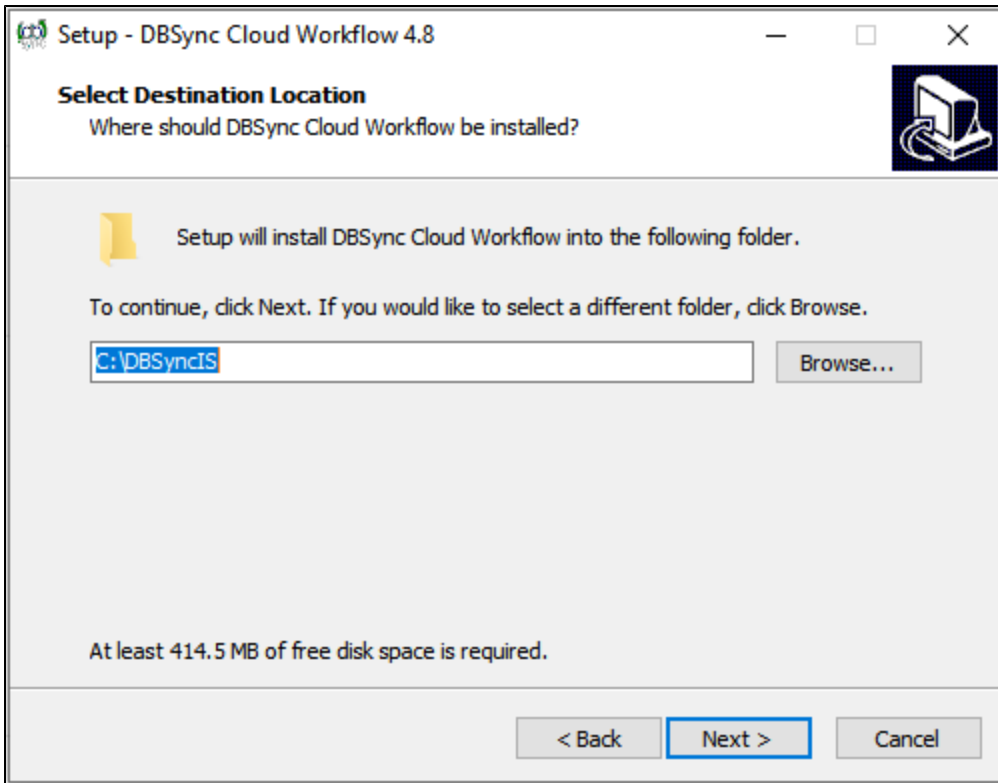
## Installing On-Premise version of DBSync

- Open [www.mydbsync.com](http://www.mydbsync.com) from your browser and click on **Customer Login**.
- Login to your DBSync profile by entering your DBSync **Username & Password**.
- Once logged in, go to the **Download** section for **Windows and Linux** link.
- Download the DBSync application by clicking on the **Download** link as shown.

- 
- Double-click **DBSync\_VXX\_XXX.exe** to start the installation. The "\_Welcome to the DBSync Cloud Workflow 4.8 Setup \_Wizard" displays:
  - Select "**I accept the terms of the license agreement**" and click **Next**.

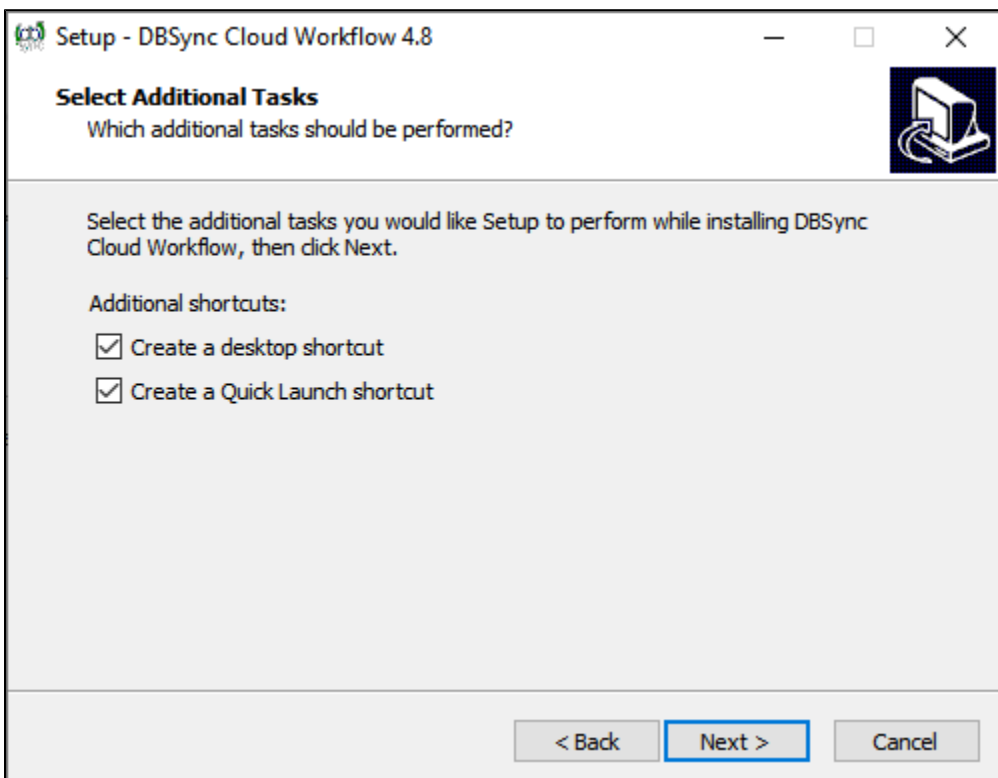


- Click **Next** to use the default directory for installation.
- If you want to install DBSync in a different location, then click **Browse** and specify the location.

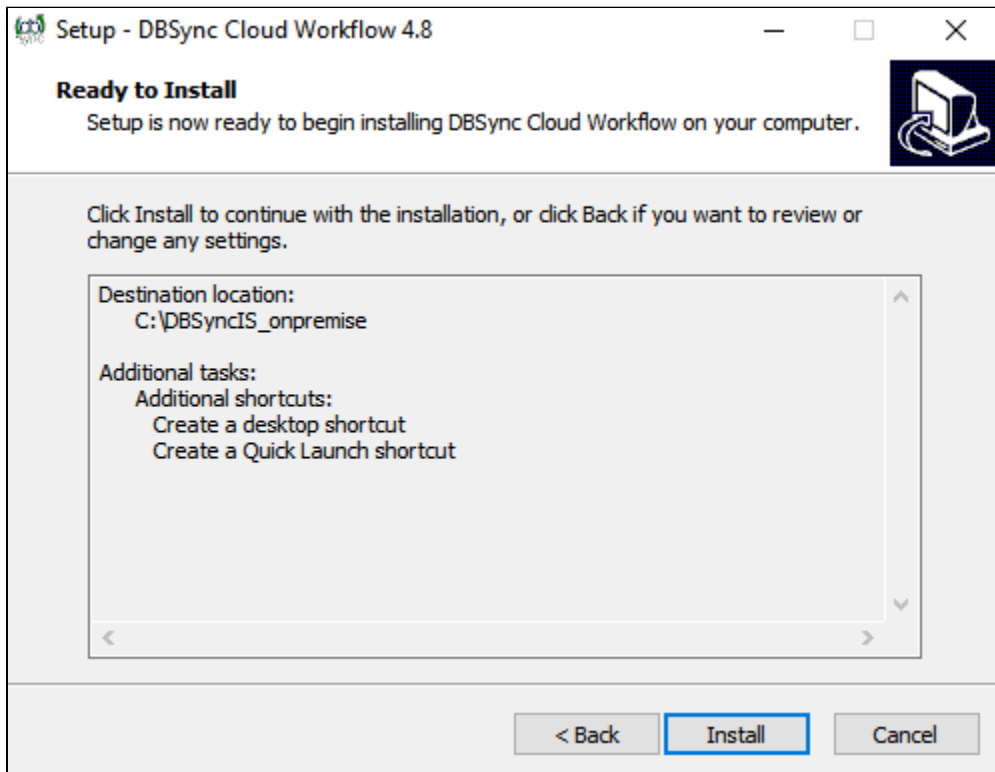


**Note:** The minimum free disk space required to install DBSync Cloud Workflow 4.8 in your system is 179 MB.

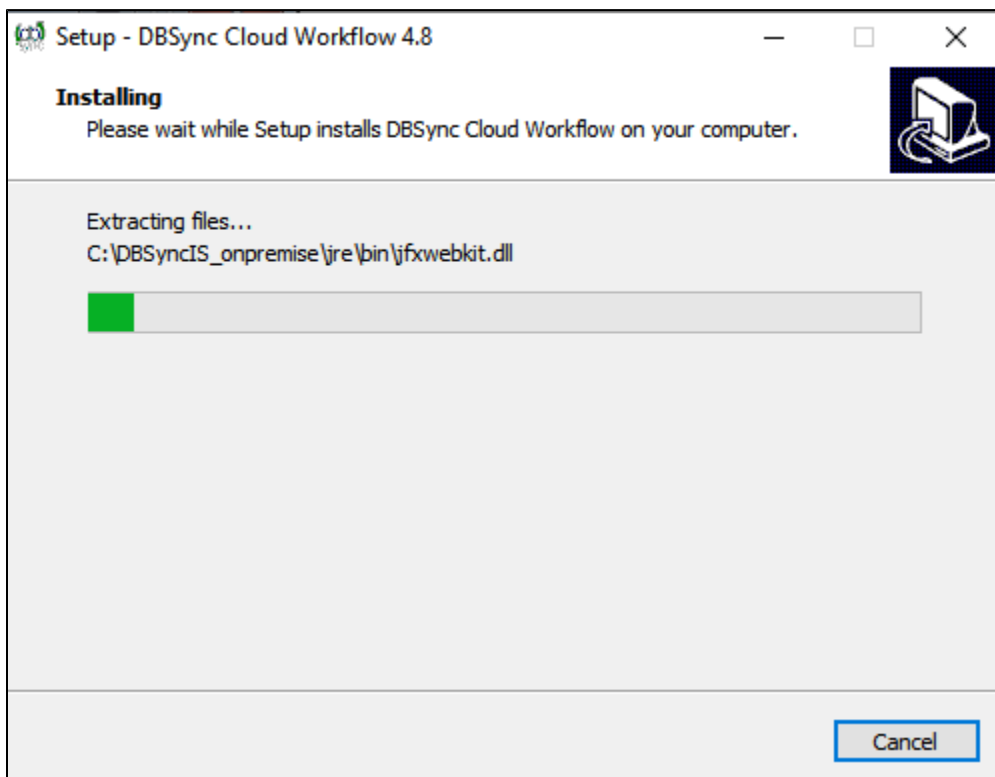
- Click "**Next**" to use the default directory from the start menu folder.
- If a user wants to select a different start-up DBSync Cloud Workflow 4.8 folder then, click "**Browse**" and specify the folder.
- Select an additional icon checkbox to create the "**Desktop**" and "**Quick Launch**" icons.



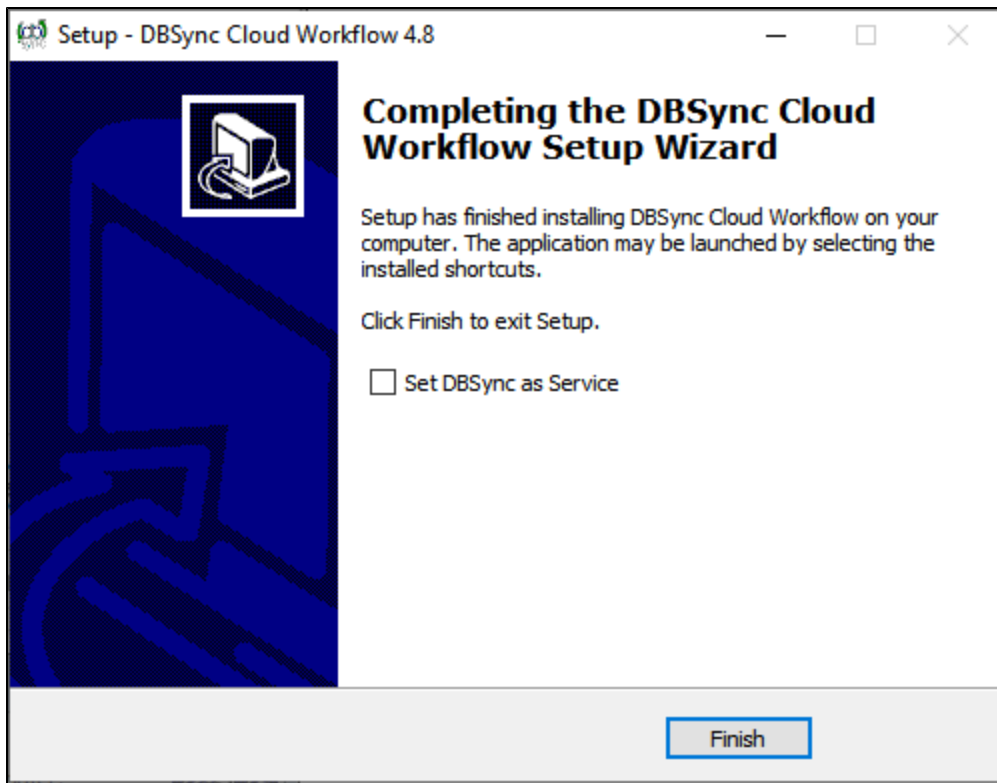
- Click **Next**. The 'Ready to Install' Wizard displays. You can view the installation destination location, folder and additional tasks you have selected.



- Click **Back** to review; or, to make any changes.
- Click **Install** to continue with the installation. The Installing Progress wizard displays the progress of installation as the files are being copied.



- Click **Cancel** to stop the installation. Or else, the installation completes without any interruption.
- DBSync Cloud Workflow 4.8 Completing Integration Suite Setup Wizard displays the status of the installation.



**Note:** You can also use DBSync as a service by placing a checkmark in the checkbox - as shown above.

- Click on Finish to complete the installation of On-Premise DBSync.